

# DRIVING BUSINESS GROWTH

Michigan has made strides since the recession, with unemployment down to 4.1% in 2018 from a peak of 13.7% in 2009. Over the past nine years, the state's thriving business climate created more than 588,000 private sector jobs, and the median household income has increased by 25%.



Automotive manufacturing jobs  
have grown

**10%**  
from 2015 to 2019

From 2009 to 2019  
Wayne (#1), Macomb (#8),  
and Oakland County (#17)

**led the nation**  
in new manufacturing jobs

Since the recession (2009),  
automotive manufacturing  
jobs have grown by

**49.2%**,  
approximately  
**60,867 jobs**

# GLOBAL MOBILITY LEADER

Michigan is a world leader in connected and automated vehicle legislation and infrastructure investment. Matched with the testing and deployment of connected, automated, and electric vehicles, the state has become a global mobility hub.

**#1 in the nation**  
for engineering talent concentration



Home to  
**globally recognized automated testing sites,**

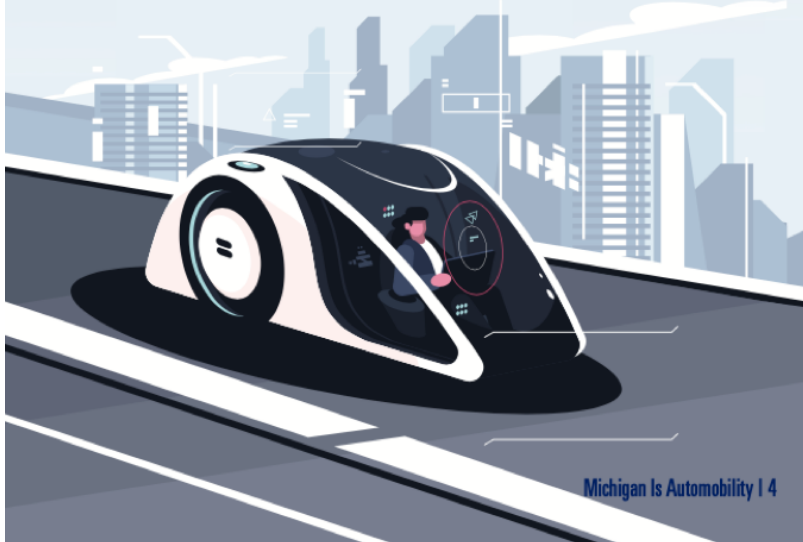
with Mcity in Ann Arbor, the American Center for Mobility in Ypsilanti, and Kettering University GM Mobility Research Center in Flint



Home to the  
**largest deployment of V2I**

(vehicle-to-infrastructure) technology in the U.S., with more than 500 miles of V2I-enabled roadway

Michigan ranks  
**#6 in the nation for number of inventors,**  
with 9,454 issued patents in 2019



Michigan Is Automobility | 4